

Project NOAH Website Overview

Jo Brianne Louise Briones

Science Research Specialist I
Storm Surge Hazard Mapping
DOST – Project NOAH

Lower Mekong Initiative International Workshop
Hanoi, Vietnam
August 2014

Department of Science and Technology
Nationwide Operational Assessment of Hazards



- Severe Weather
- Rainfall Events
- Flood Events



Nationwide Operational Assessment of Hazards

Home News Feed Disaster Timeline About Project NOAH NOAH Open File Reports

Philippines rides high-tech Project NOAH for disaster preparedness

By Joel D. Pinaroc (www.zdnet.com) It is said that more than 10 typhoons visit the Philippines every year. As such, disasters such as large-scale flooding and landslides have become almost routine challenges for the government. For the hundreds of communities across the archipelago, typhoon season also means the looming threat of evacuation and the loss of home...

Continue reading →

DOST holds IEC Seminar on Project NOAH

By: Maria Aprila Cruz (Philippine Information Agency) BAGUIO CITY, Oct. 29 (PIA) – The Department of Science and Technology (DOST) recently conducted Information Education Communication (IEC) seminar on the Nationwide Operational Assessment of Hazards or Project NOAH at the Crown Legacy Hotel here. The IEC seminar involved experts from the DOST-NOAH, the Philippine Atmospheric, Geophysical,...

CdeO attains zero casualties through DOST's DREAM project (PIA)

CAGAYAN DE ORO CITY, October 22 (PIA) – Through the Department of Science and Technology (DOST) Disaster Risk and Exposure Assessment for Mitigation (DREAM) project, local government here attained zero casualties during typhoon Pablo on December 2012. DOST-DREAM, under Project (NOAH) Nationwide Operational Assessment of Hazards is response to the call of President Benigno S. ...



Apps for stress-free Undas (Sunstar)

Be ready for the weather "Project Noah Mobile for Android, which is downloadable for free from the App Store and Google Play, can give you real-time weather updates and show the probability of rain in different areas. Get the app so you'd know whether to bring rain gear or dress for warm weather. Smart...

DOST-DREAM project extended to cover while Phl in 3d flood maps (PIA)

QUEZON CITY, Oct. 26 (PIA) — The Department of Science and Technology (DOST) – Project NOAH's component called the Disaster Risk and Exposure Assessment for Mitigation or DREAM Program will be extended in order to scan the whole country and produce three-dimensional (3D) flood hazard maps. Dr. Rowena Guevarra, executive director of the project's funding...

DOST to expand Project NOAH (The Philippine Star)

By Rainier Allan Ronda (The Philippine Star) | Updated October 27, 2013 – 12:00am MANILA, Philippines – Project NOAH or Nationwide Operational Assessment of Hazards will expand its Disaster Risk and Exposure Assessment for Mitigation or DREAM program to come up with three-dimensional flood hazard maps covering the entire country. Rowena Guevarra, executive director of the Department of...

1 week ago in Uncategorized.

Search Blog Posts

Recent Posts

[Philippines rides high-tech Project NOAH for disaster preparedness](#)

bsite

LEGEND BLOG ABOUT HELP REPORT A FLOOD



ateX 2
yan, may pag-ulan pong
ap sa Lantawan, Basilan
ikas na 37.846 mm/hr.

ateX As of 2:00 pm:
f rainshowers is high in
y of Calamba, Laguna.
ted. More info @

agasa Thunderstorm
No. 11 Issued at
21 May 2013
orm over San Antoi,
an isidro and...
/b1ofNLH4iw

agasa 01:10pm
orm with moderate to
ns over #Pangasinan
y persist for 1-2hrs.

ateX 1:00 pm: Sa

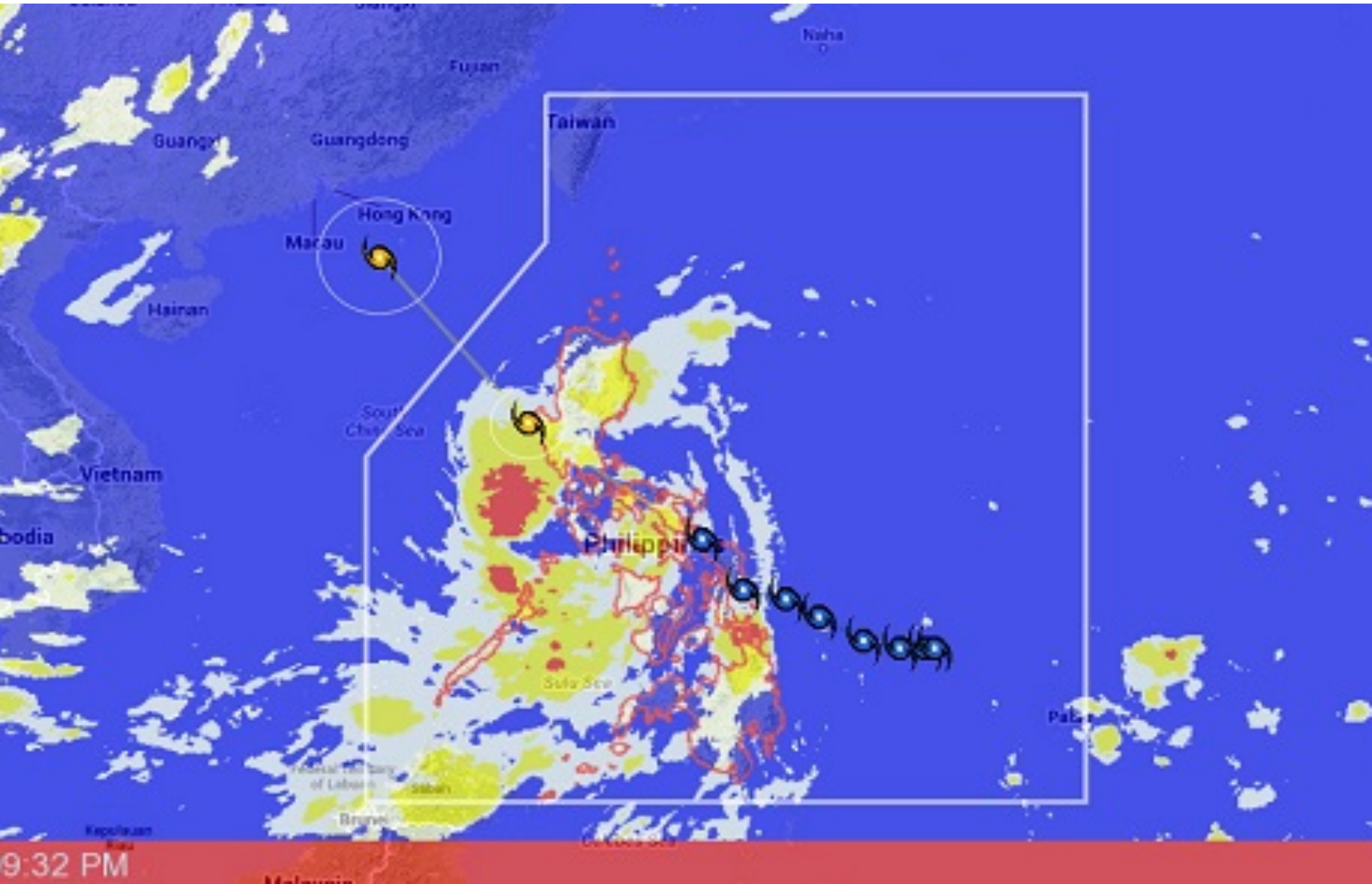
#dost_pagasa THUNDERSTORM ADVISORY No.3 #VPRSD 1:44PM (05NOV'13) Thunderstorm is affecting over the seas 8km W of Loon... <http://t.co/VzThqvKidx>

#dost_pagasa #MPRSD 1:47PM, light to moderate #rains affecting portions #SurigaoDelSur (SanMiguel), #CompostelaValley... <http://t.co/wHnGT85Gpg>

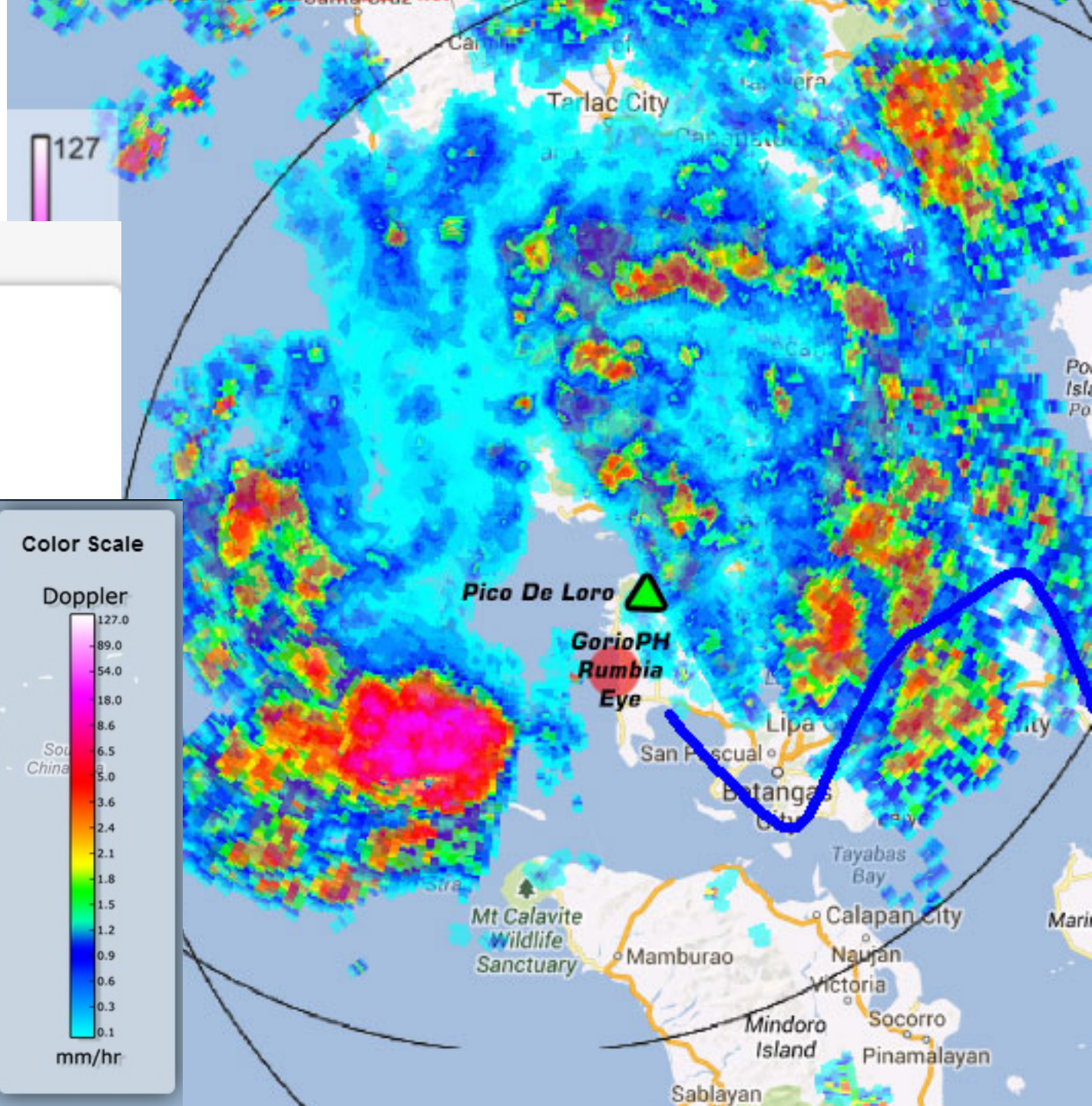
#dost_pagasa #NCR_PRSD 1:46PM, light to moderate with occasional heavy #rain affecting portion of #Zambales and #Tarlac which may persist for 1-2 hours.

#dost_pagasa #MPRSD 1:44PM, light to moderate #rains affecting portions #AgusanDelNorte Nasipit, Cabadbaran,

Typhoon Track & MTSAT



Doppler Radar



DOPPLER

Subic Station

Baguio Station

Subic Station

Tagaytay Station

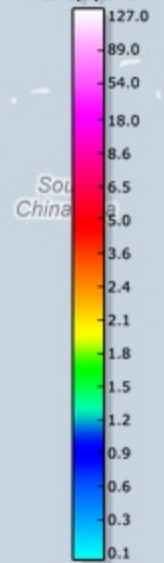
Cebu Station

Hinatuan Station

Tampakan Station

Color Scale

Doppler



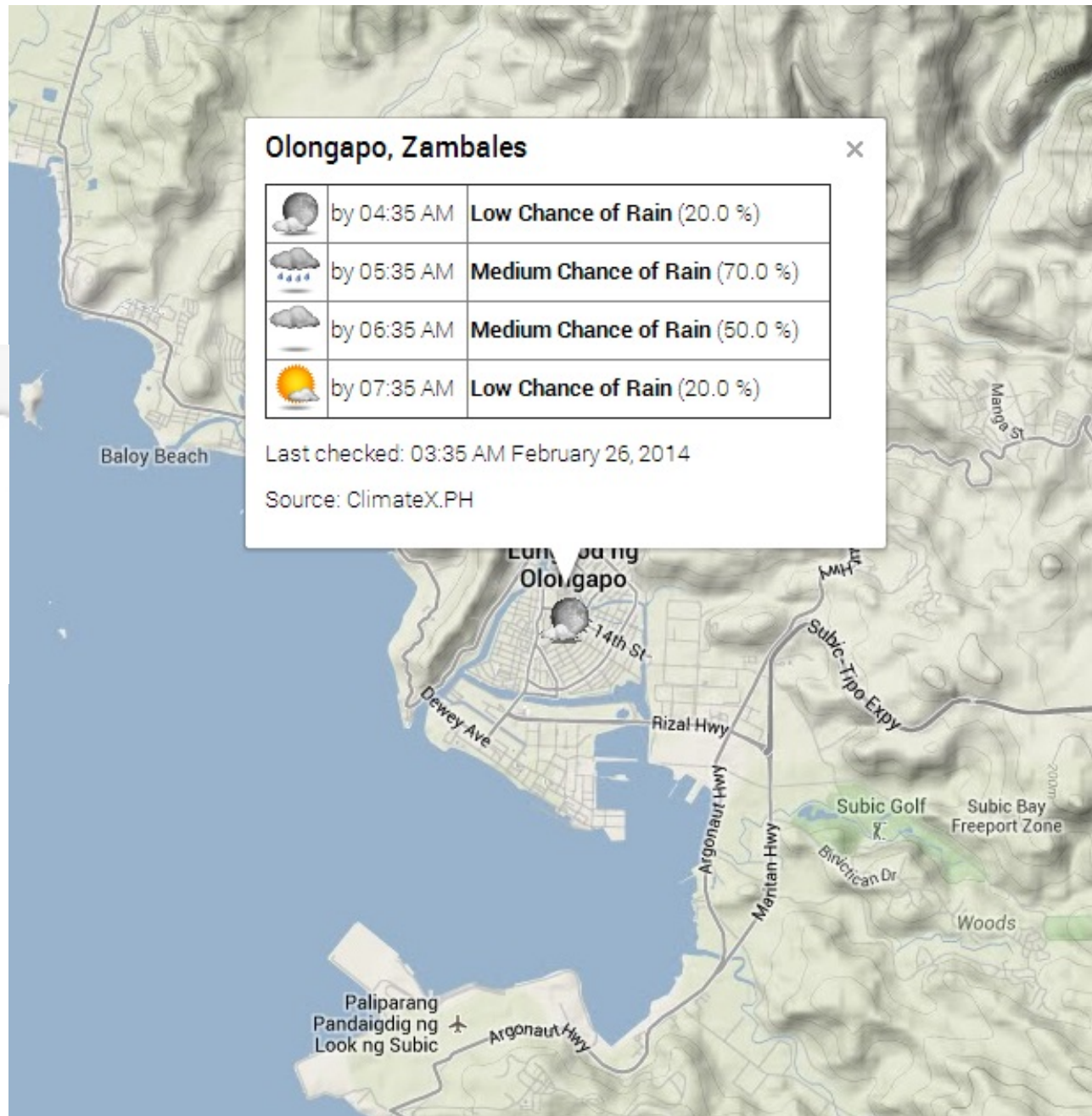
mm/hr

Rain Forecast

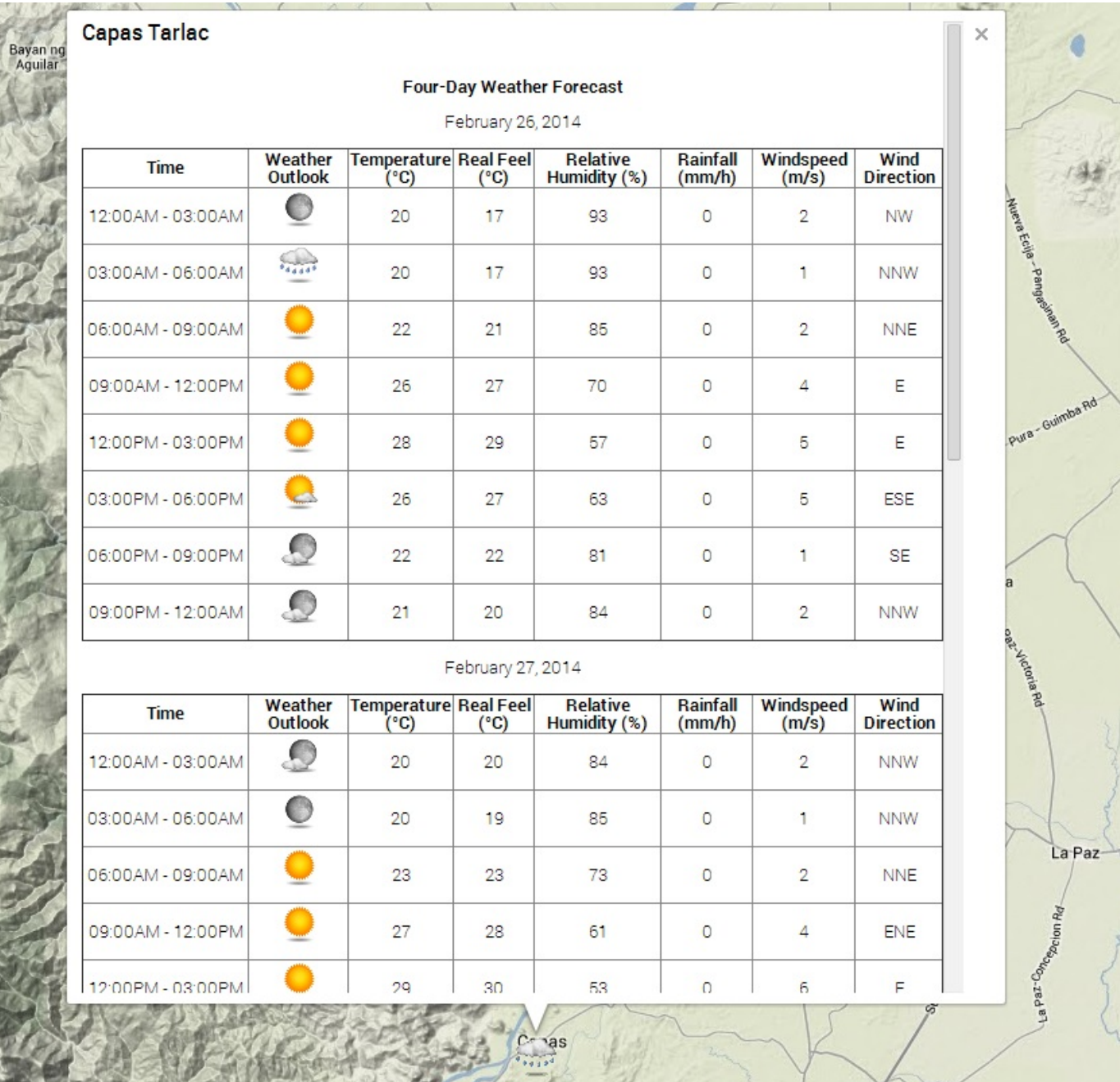
WEATHER OUTLOOK

Rain Forecast

- Rain Forecast
- Weather Outlook
- PAGASA Cyclone Update



Weather Outlook



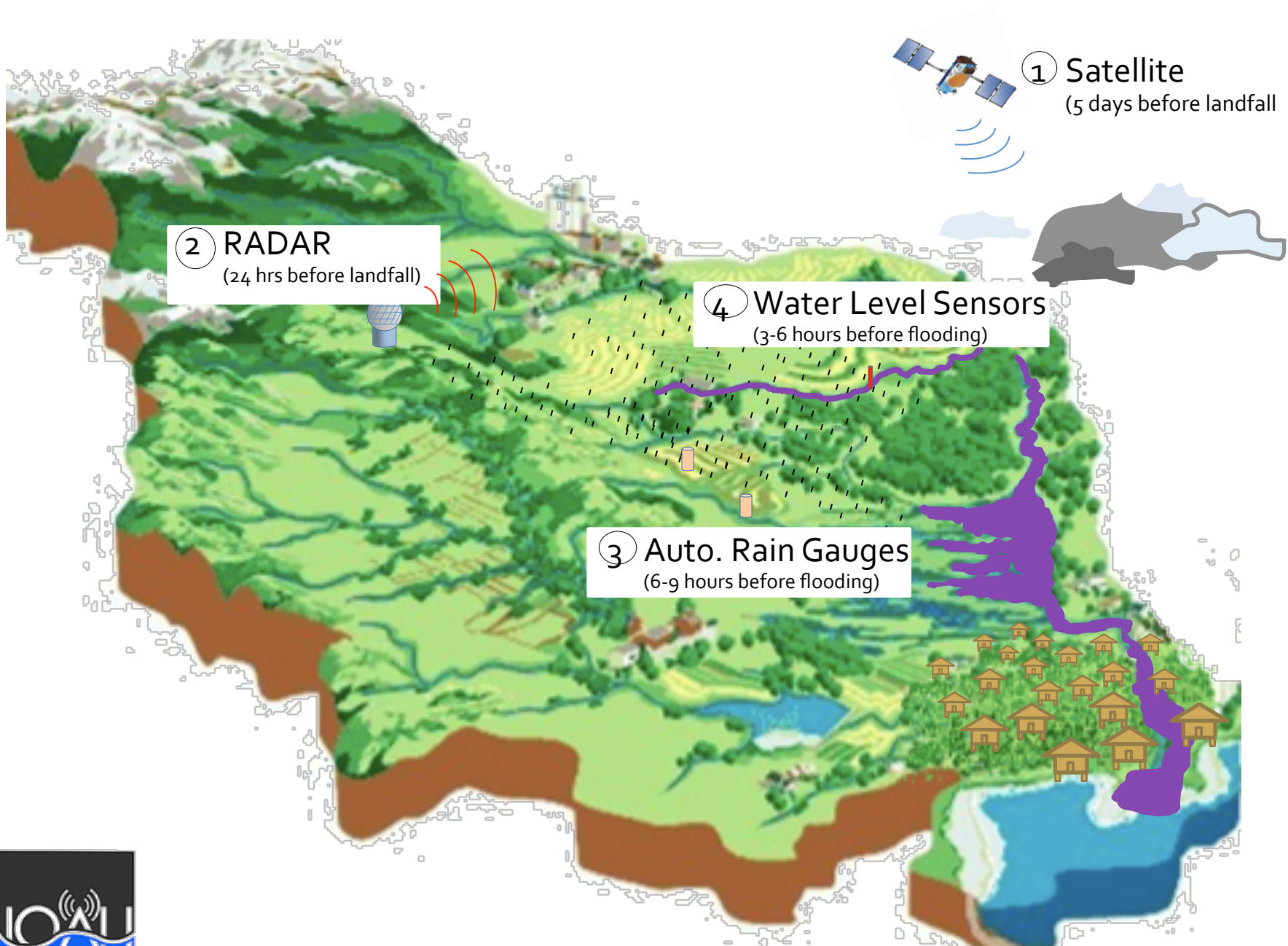
WEATHER OUTLOOK

Weather Outlook

Rain Forecast

Weather Outlook

PAGASA Cyclone Update



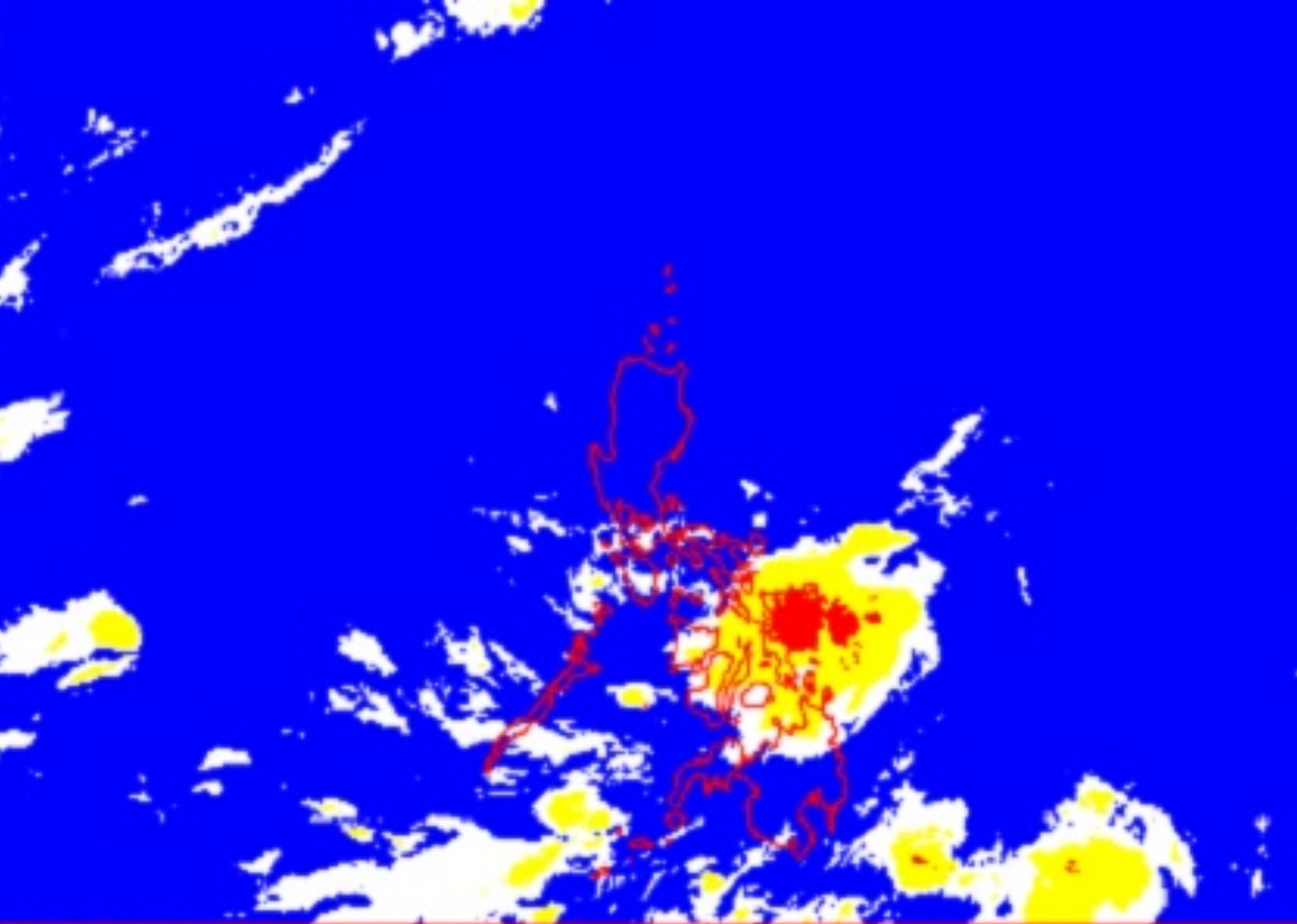
① Satellite
(5 days before landfall)

② RADAR
(24 hrs before landfall)

④ Water Level Sensors
(3-6 hours before flooding)

③ Auto. Rain Gauges
(6-9 hours before flooding)





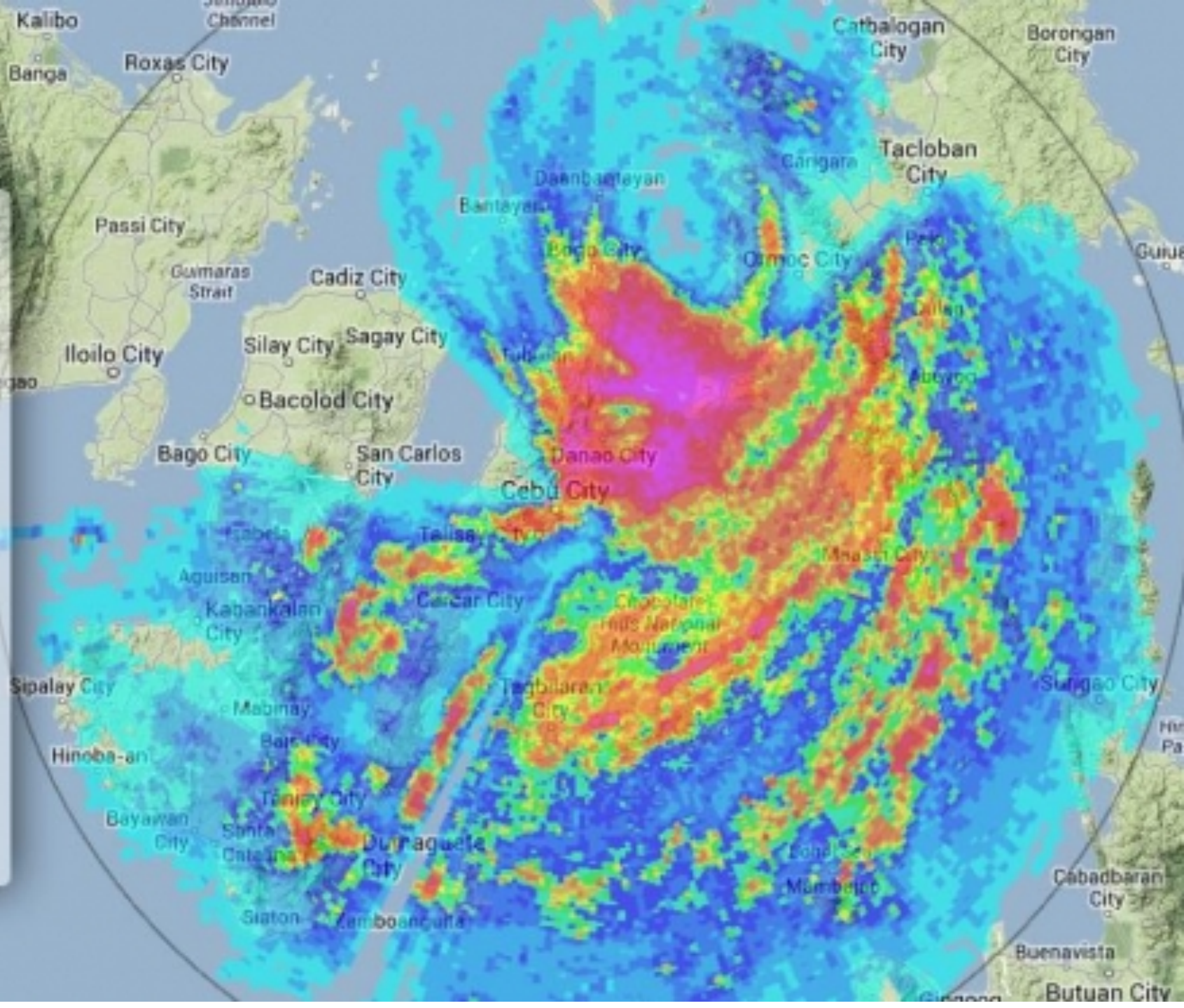
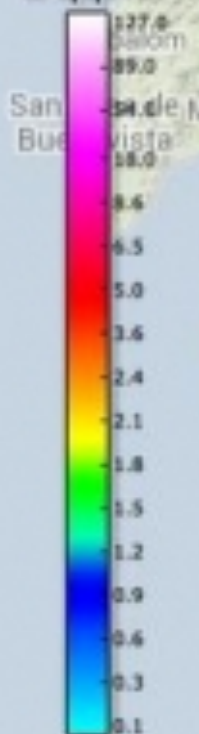
12:01 AM



09:32 PM

Color Scale

Doppler



SEARCH

OVERVIEW

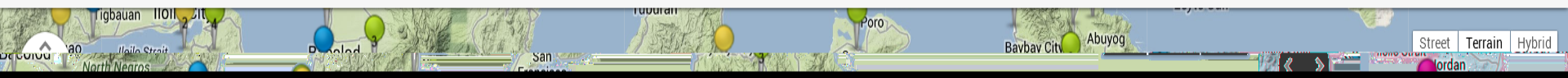
WEATHER OUTLOOK

DOPPLER

WEATHER STATIONS

FLOOD MAP

HEALTH HAZARDS





REPUBLIC OF THE PHILIPPINES
Department of Science and Technology
Philippine Atmospheric, Geophysical and
Astronomical Services Administration (PAGASA)
PAGASA Science Garden, Agham Road, Diliman, Quezon City 1100

GENERAL FLOOD ADVISORY #3 (Final)
For REGION 4-B (MIMAROPA)
Issued at 9:00 AM, 02 February 2014

PRESENT WEATHER:

NORTHEAST MONSOON AFFECTING EXTREME NORTHERN LUZON.

FORECAST 24-HR RAINFALL:

LIGHT RAINS AND THUNDERSTORMS.

WATERCOURSES NO LONGER TO BE AFFECTED:

- **MARINDUQUE** RIVERS AND ITS TRIBUTARIES PARTICULARLY TAWIRAN-TAGUM (MARINDUQUE) AND BOAC.
- **MINDORO OCCIDENTAL** RIVERS AND ITS TRIBUTARIES PARTICULARLY ABRA DE ILOG, CAGARAY, LABANGAN, MAGBANDO, LUNINTAO, ANAHAWIN, MONPONG, AMNAY, POLA, PAGBAHAN, MAMBURAO AND IBOD.
- **MINDORO ORIENTAL** RIVERS AND ITS TRIBUTARIES PARTICULARLY MALAYLAY-BACO, PULANG TUBIG, MAG-ASAWANG TUBIG, BUTAS, PULA, AGSALIN, BANSUD, SAMAGUI, BONGABON, BAROC, BULALACAO AND BALETE.
- **PALAWAN** RIVERS AND ITS TRIBUTARIES PARTICULARLY ABONGAN, LIAN, BARABAKAN, RIZAL, CARAMAY, LANGONAN, BABUYAN, BACUNGAN, IWAHIG PENAL, INAGAUAN, ABORLAN, MALASGAO APURAUAN, BATON-BATON, ARAMAYAWAN, IWAHIG, PANITIAN, PULOT, LAMAKAN, KINLUGAN, ERAAN, TIGA-PLAN, MALABANGAN, ILOG, BANSANG, CONDUAGA, CULASIAN, IWAHIG (BROOKS), OKAYAN, CANIPAN AND BUSUANGA (CORON).
- **ROMBLON** RIVERS AND ITS TRIBUTARIES

THIS IS THE FINAL FLOOD ADVISORY FOR THIS EVENT UNLESS SIGNIFICANT RAINFALL OCCURS.

SEARCH

OVERVIEW
 ▼

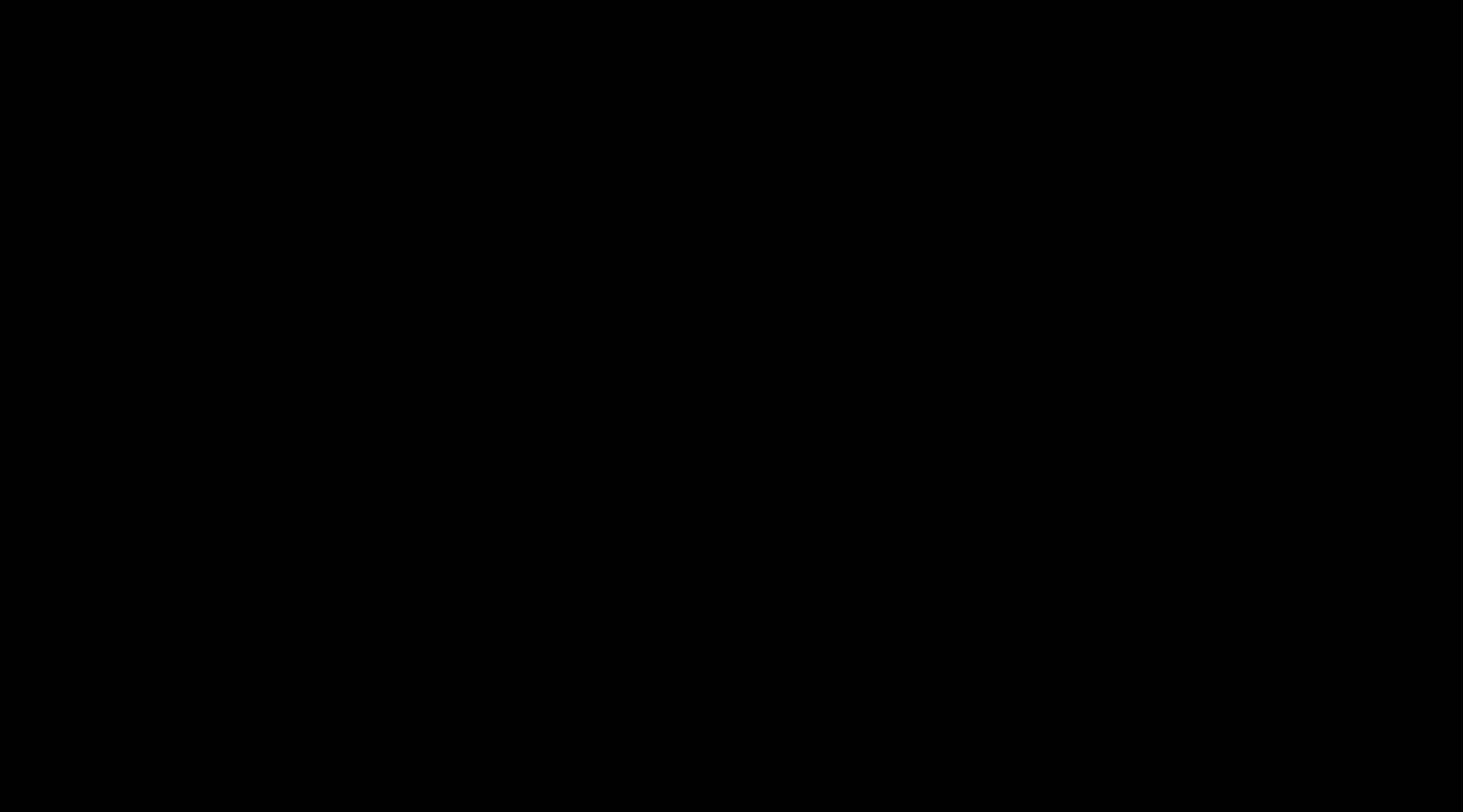
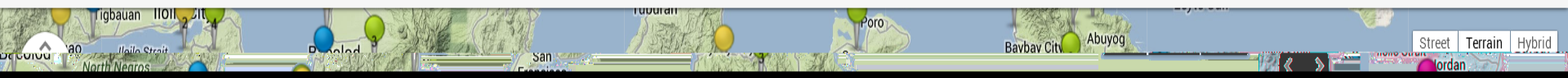
WEATHER OUTLOOK
 ▼

DOPPLER
 ▼

WEATHER STATIONS
 ▼




FLOOD MAP
 ▼

HEALTH HAZARDS
 ▼

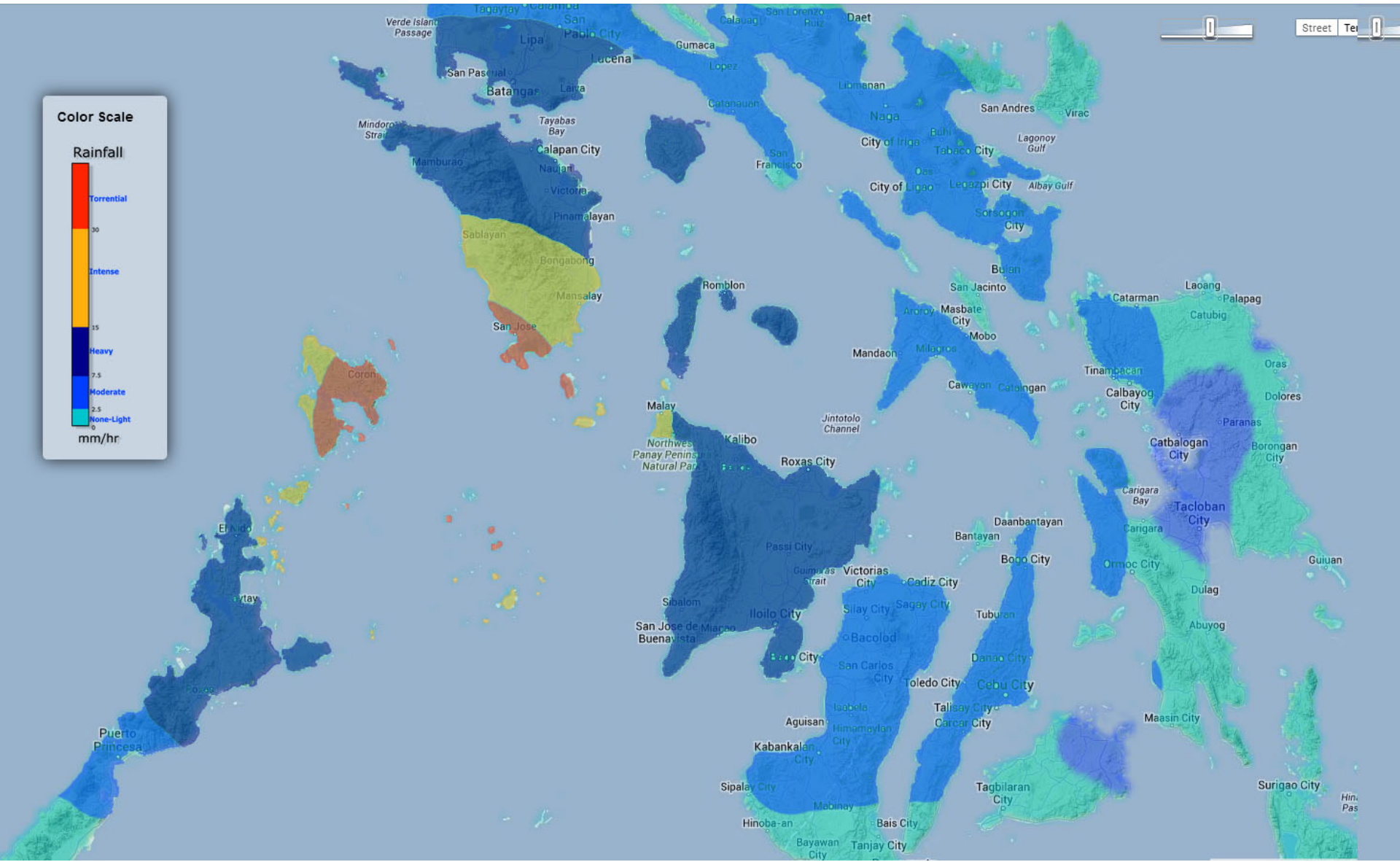




HEAVY RAINFALL WARNING LEVELS

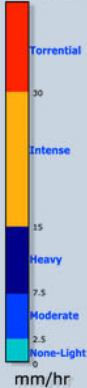
RAINFALL VALUES (mm) FOR METRO MANILA	MEANING	LEVELS
YELLOW RAINFALL ADVISORY Rainfall of 7.5 to 15 mm per hour has fallen or expected to fall and most likely to continue for the next 3 hours.	Community AWARENESS FLOODING is POSSIBLE in low-lying areas and near river channels	Advisory 
ORANGE RAINFALL ADVISORY Rainfall of more than 15mm up to 30mm within 1 hour has fallen or expected to fall or if continuous rainfall for the past 3 hours is more than 45mm to 65mm and most likely to continue for the next 3 hours.	Community PREPAREDNESS FLOODING is THREATENING in low-lying areas and near river channels	Alert 
RED RAINFALL WARNING Rainfall of more than 30mm within 1 hour has fallen or expected to fall or if continuous rainfall for the past 3 hours is more than 65mm and most likely to continue for the next 3 hours.	Community RESPONSE SEVERE FLOODING is EXPECTED Take necessary precautionary measures	Emergency 

Disclaimer: Rainfall threshold values are arbitrary and may vary depending on the area of concern. These will be refined as soon as more data become available.

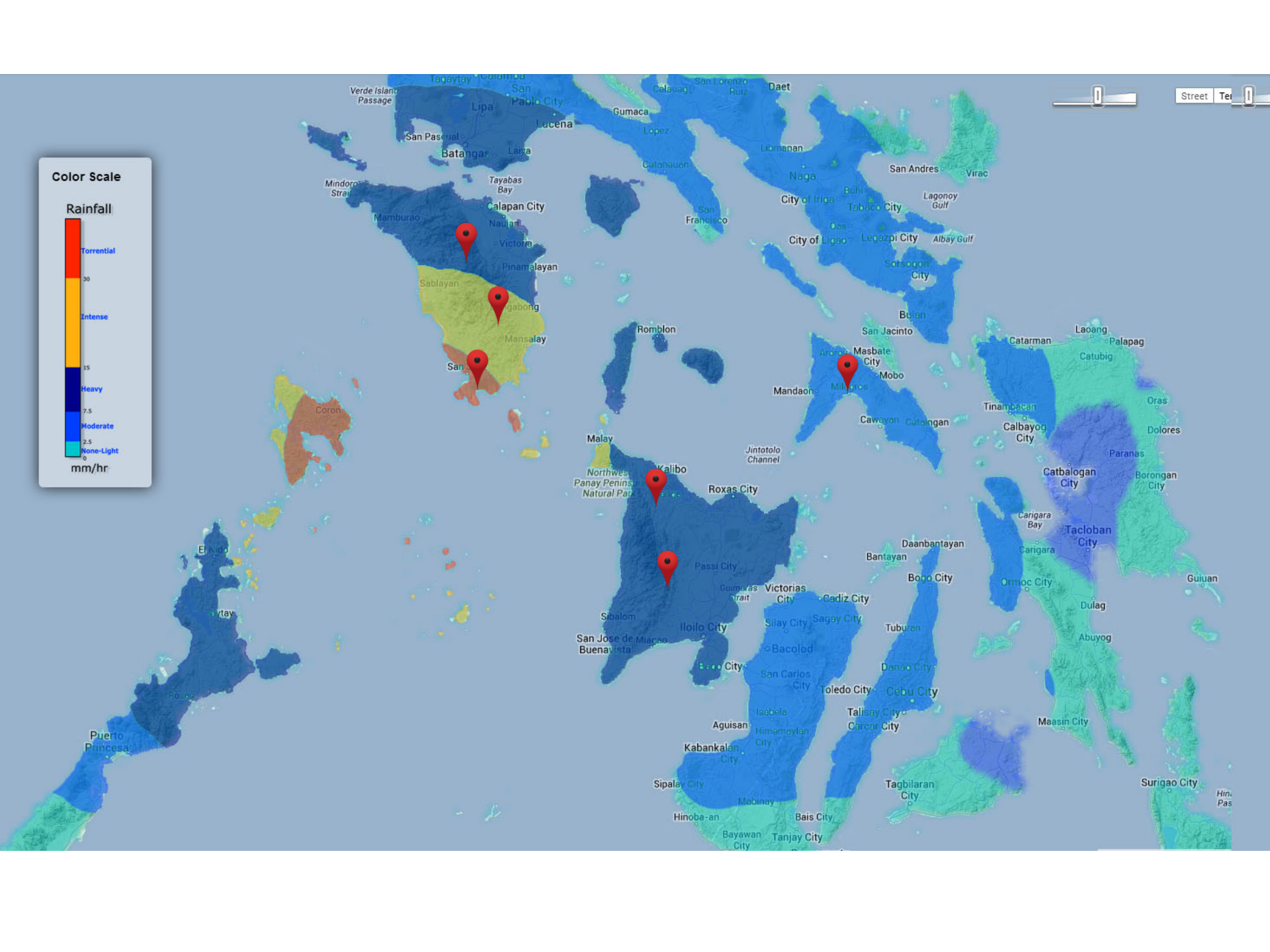


Color Scale

Rainfall

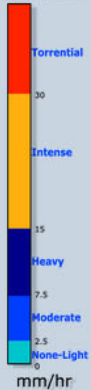


mm/hr

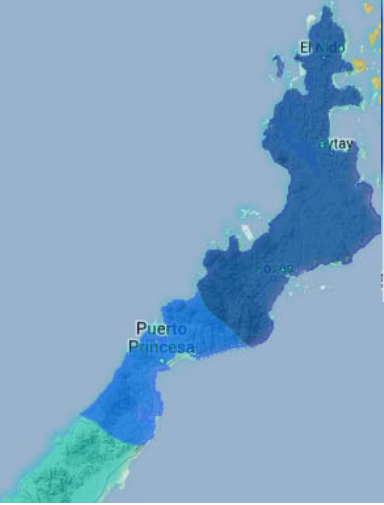
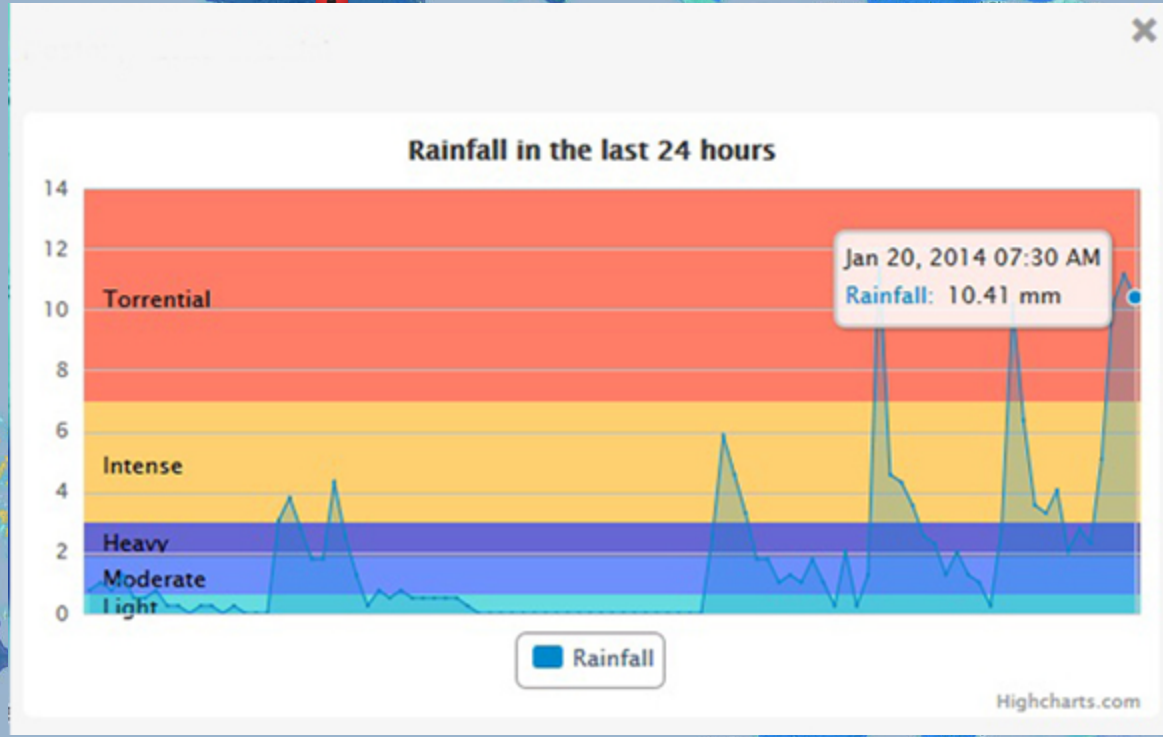
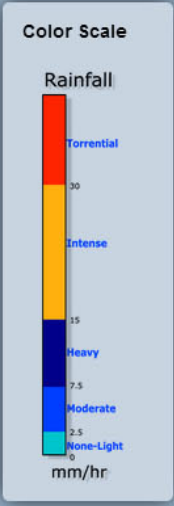


Color Scale

Rainfall



mm/hr



SEARCH

OVERVIEW
 ▼

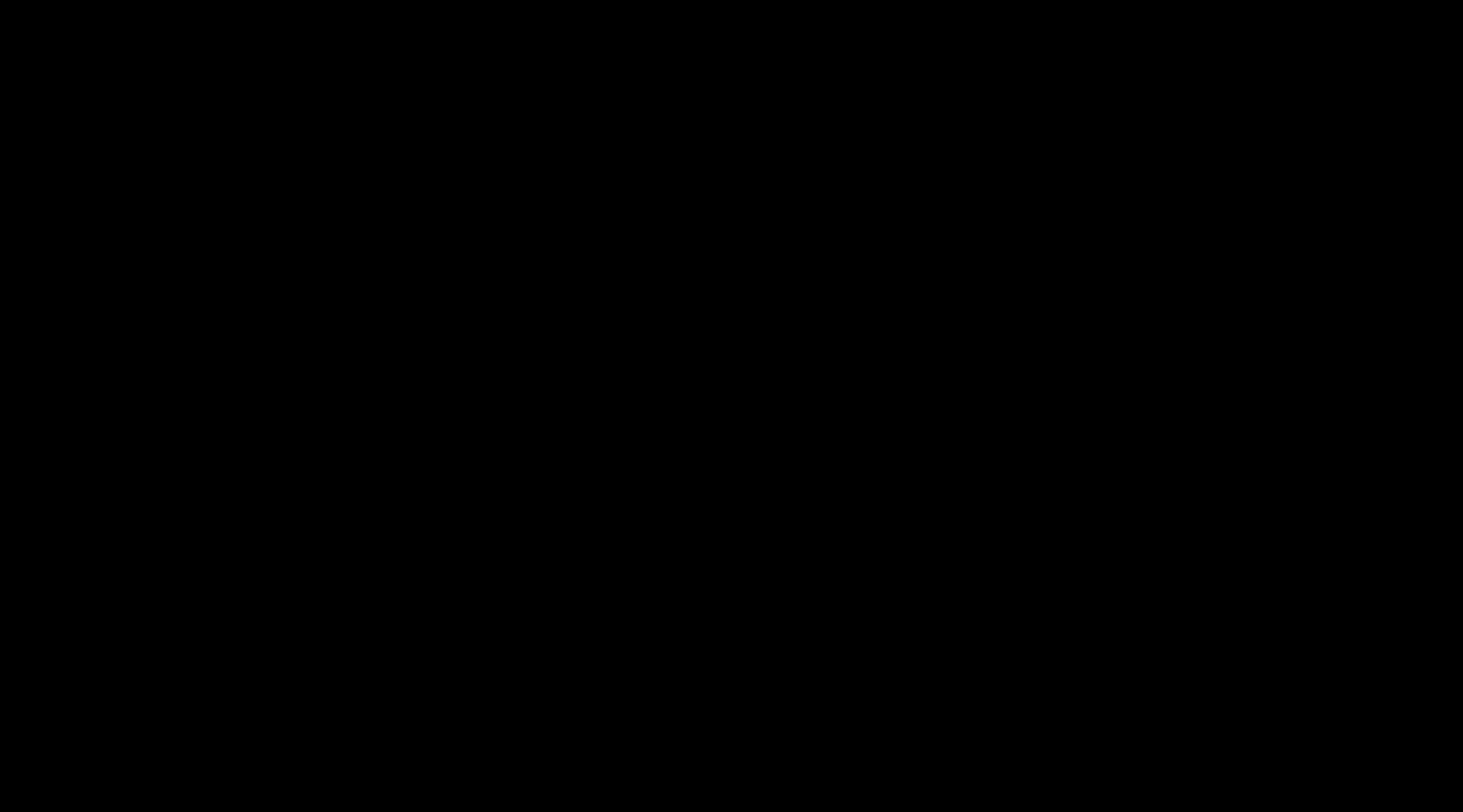
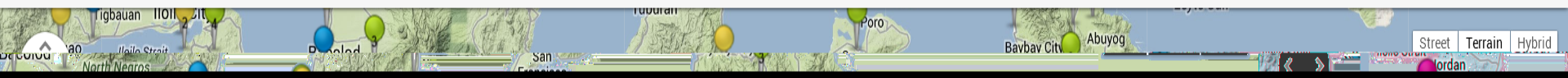
WEATHER OUTLOOK
 ▼

DOPPLER
 ▼

WEATHER STATIONS
 ▼

FLOOD MAP
 ▼

HEALTH HAZARDS
 ▼



Maraming Salamat po!

Download our apps:



Visit our website:

noah.dost.gov.ph

Also visit:

dream.upd.edu.ph

Be informed by:

blog.noah.dost.gov.ph

E-mail us:

info@noah.dost.gov.ph

Follow us:

[@nababaha](#) [@ikendothis](#)

Call/Text us:

(02) 434-1840 / 09062044164

Resources

- DOST Project NOAH Website. Accessed through <http://noah.dost.gov.ph>
- DOST Project NOAH Blog. Accessed through <http://blog.noah.dost.gov.ph>
- Google Play. Accessed through <https://play.google.com/store/apps/details?id=xtend.noah> and <https://play.google.com/store/apps/details?id=ph.com.voyager.raincheck>
- Lagmay, et.al. Project NOAH IEC Presentations
- Lagmay, AMFAL., Report to Stakeholders Presentation. October 2013.
- Mines and Geosceinces Bureau. Landslide and Flood Susceptability Map of Quezon City, Philippines.
Accessed through <http://geohazard.essc.org.ph/>
- National Disaster Risk Reduction and Management Council. READY Hazard Map for Leyte Storm Surge.
Accessed through http://ndcc.gov.ph/index.php?view=detail&id=14&option=com_joomgallery
- Nartea, Gil., PNOy, DOST, Marikina officials launch Project NOAH. Accessed through <http://www.gmanetwork.com/news/photo/21857/pnoy-dost-marikina-officials-launch-project-noah>
- Philippine Geoportal. Accessed through <http://www.geoportal.gov.ph/>
- Racoma, BA. Bagyong Yolanda at ang Project NOAH.
www.pinoyadventurista.com/2012/08/pagasa-dost-weather-radar-station.html